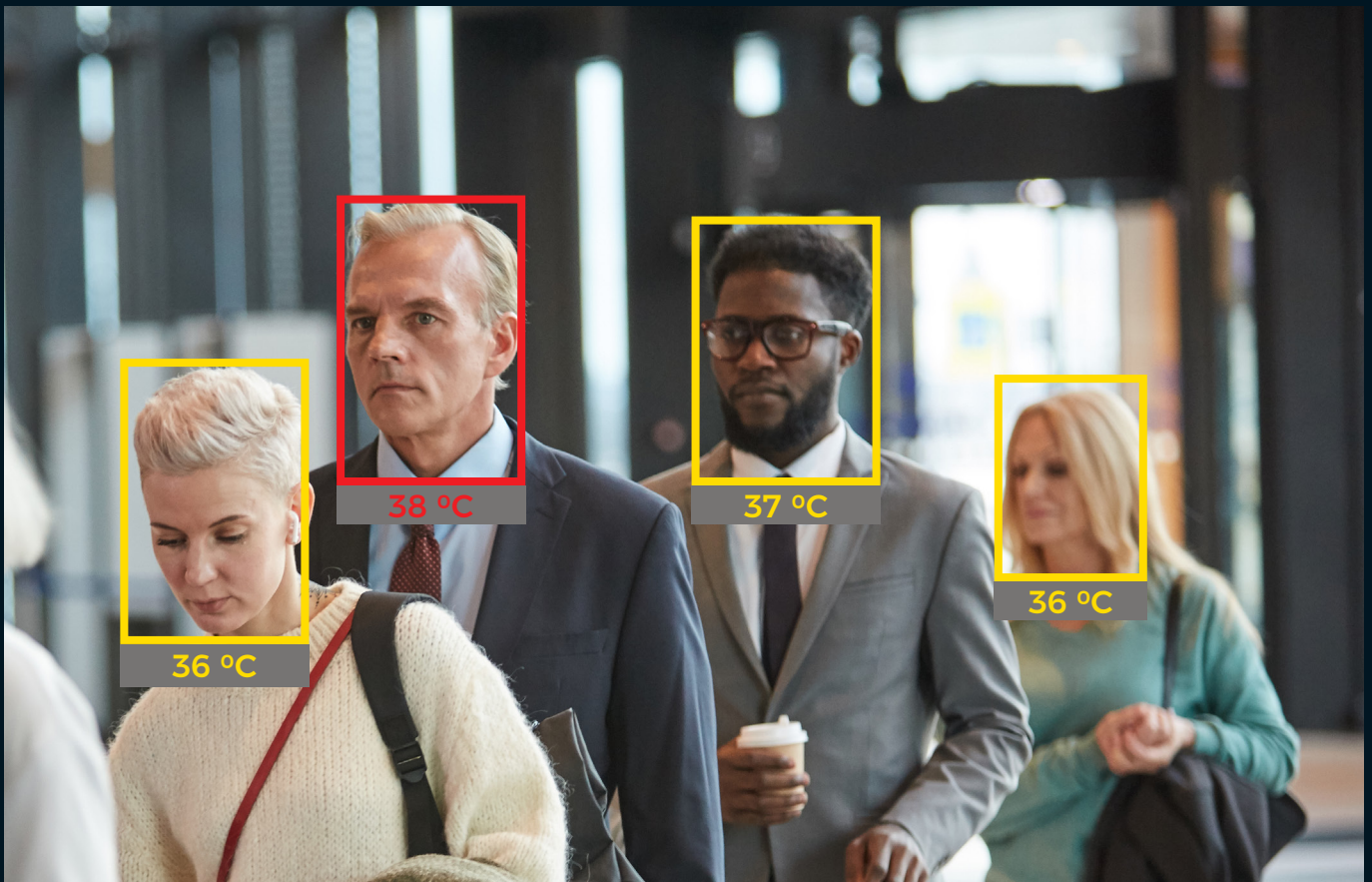


GEUTEBRÜCK

Automatic Fever Detection



Body temperature measurement in real time

The Geutebrück all-in-one solution for body temperature measurement, recognizes if a person within the camera image, while entering your facility has an elevated body temperature (fever). In this way, you can identify a risk person at an early stage, separate them and transfer them to further care.

The practical version of the solution consisting of a thermal camera and a HD video camera as well as a mini PC can be used both mobile and as a fixed installation anywhere.

The user-friendly software displays the measured body temperature of each individual person based on marked faces in the video image and alarms if a person with elevated temperature is detected.

False alarms caused by hot objects are avoided as the solution only measures the temperature of the faces. For example, if a person holds a hot drink, no alarm is triggered as no relevant value is recorded.



Recognition / Detection

Automatic recognition of heads in the video image.



Temperature Measurement

Precise temperature measurement in the faces of people with the help of the thermal camera.



Information

You can see the body temperature of each individual person on the display in the video image.



Alarm

You receive an alarm in real time with the corresponding video image, on your monitor, tablet or smartphone.



Alarm-Redirection

Alarm images can be forwarded to other task forces to identify the suspected person.



Protection

Detected people can be stopped directly at the entrance and receive appropriate tests/care.

Area of application: ministries, authorities, offices and town halls



At a time when infectious diseases are spreading among the population, it is particularly important that ministries, authorities, offices and our town halls can operate smoothly in order to manage crises and organize aid activities. The protection of officials and staff is of importance in this context. Without them, our supply system would collapse.

Stationary temperature measuring systems at the entrances of the buildings check the own employees and visitors, reducing the risk of infection amongst each other.

Area of application: Airports / Stations / Border crossing points



People from many different parts of the world arrive at airports, train stations and border crossings. The detection of people with an infectious disease by means of manual fever measurement is very complex and extremely time-consuming. Each individual person must be directed to a separation facility and measured personally by security personnel.

The automatic temperature detection system shows people within the video image in real time, highlighting who needs further tests/care and thus ensures a faster and smoother process.

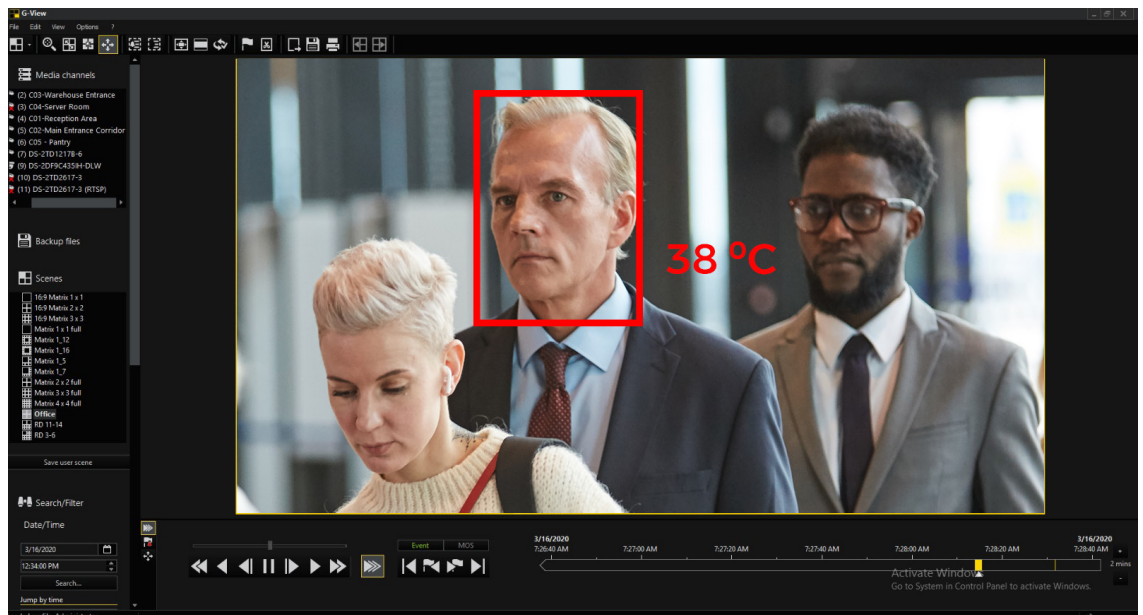
Area of application: Public Transport



People's mobility, especially in cities and metropolitan areas, is highly dependent on public transport. Every passenger wants to be taken safely, punctually and securely to their work, to the doctor, to shopping in the city center and many other destinations.

Depending on the load on the routes, the vehicles become „crowded“, making it impossible to maintain proper distances to people with an infectious disease. The risk of infection is immensely high, as viruses can also be transmitted by touching many surfaces!

The early detection of possible cases saves human lives. Stationary temperature measuring systems at neuralgic traffic junctions and as mobile systems in the vehicles create more safety for the passengers and of course for the staff. These systems make it possible to maintain the transport services as usual.

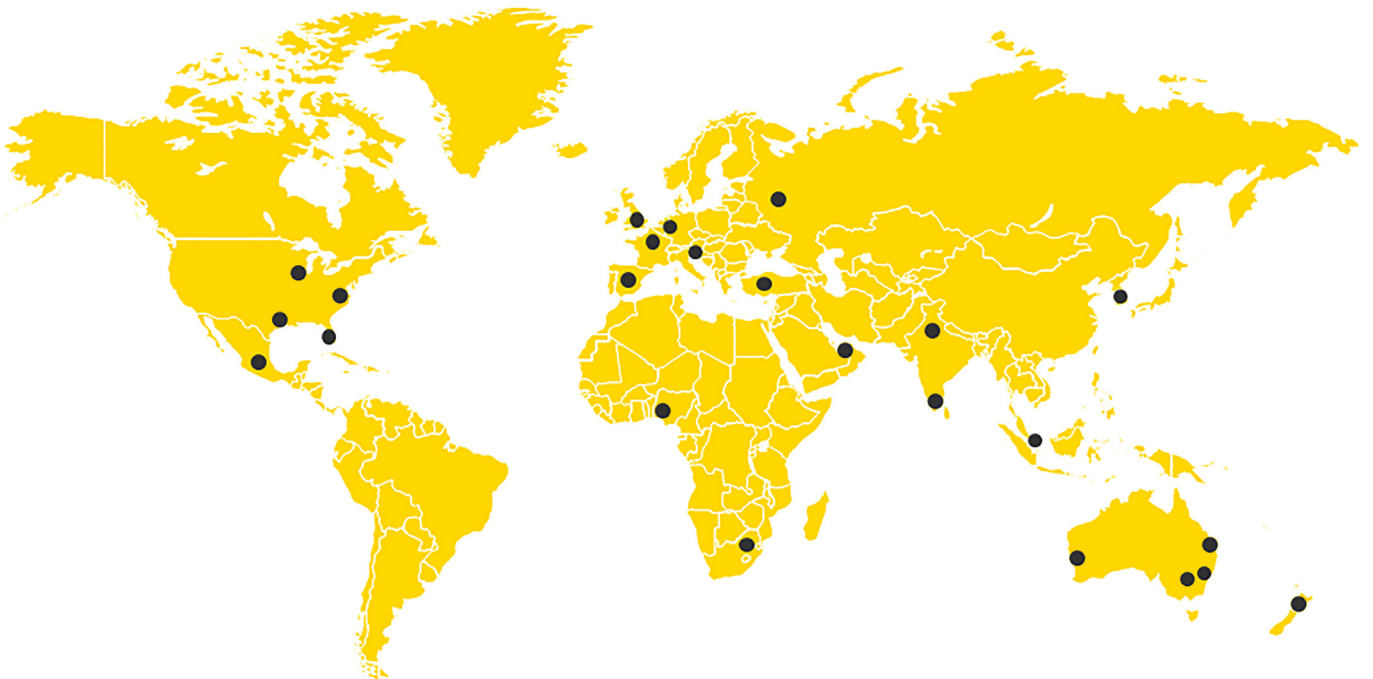


Talk to us.
We will support you with the planning and construction of your system.



We are Geutebrück

- 50 years' experience in the field of video management ...
- ... with our own development on site.
- From the first day: Made in Germany ...
- ... and represented worldwide by sales and service partners..



GEUTEBRÜCK